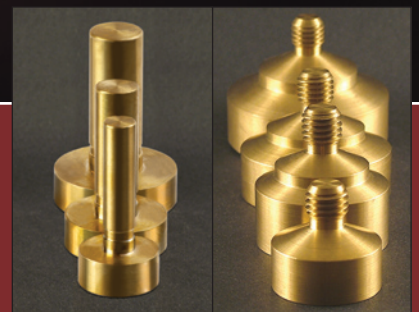


HEXACON

BRANDING IRONS



MAKE A DISTINCTIVE IMPRESSION WITH YOUR BRAND



HEXAACON

BRANDING IRONS

PRACTICAL-ECONOMICAL-PERMANENT

Branding is the most practical and economical way to permanently mark almost any material other than metal or glass. A brand is frequently used to mark tools, equipment, sporting goods and manufactured products. Typical markings include trademarks, logos, manufacturer's name or property numbers.

The powerful performance of a Hexacon Branding Iron produces a permanent, indelible brand time after time. Our products are engineered to provide a lifetime of reliable service in the most demanding applications.

A quality brand is the result of the engraved die, die temperature, thermal capacity of the branding tool, branding pressure and dwell time. The design of Hexacon Branding Irons ensures that the maximum amount of heat is transferred to the die. Whether you choose the screw tip or the plug tip design, you can be assured of the finest results.

BRANDING IRON FEATURES

- Precision element wound around a high conductivity core provides consistent die temperature and a long service life.
- Ultra strong, nickel-plated alloy steel case can be clamped in a vise for easy maintenance
- Hardwood handle ensures a cool grip
- Burn resistant, extra flexible, neoprene power cord
- Dies can be supplied blank or engraved to your specification
- All major parts (heater, handle and cord) are user replaceable
- Three-wire grounded construction
- S-12 iron holder include with each iron

APPLICATIONS INCLUDE

Scaffolds / Ladders	Wooden Boxes/Pallets
Utility Poles	Furniture / Cabinets
Lumber	Tools
Batteries	Saddles & Leather Goods
Tires	Sporting Goods
Reels / Spools	Baseball Bats
Plastic Parts	Cheese
Handmade Crafts	Cork

BRANDING IRON TABLE

	Part No.	Power (watts)	Thread or Shank diam	Temp Controller
SCREW	BI-225	250	5/8"-11 tpi	TC-870
	BI-350	350	5/8"-11 tpi	TC-875
	BI-500	500	5/8"-11 tpi	TC-877
	BI-700	700	5/8"-11 tpi	TC-877
	BI-800	800	5/8"-11 tpi	TC-877
PLUG	BI-P200	200	5/8"	TC-870
	BI-P300	300	7/8"	TC-875
	BI-P550	550	1-1/8"	TC-877



SEMI-AUTOMATED BRANDING

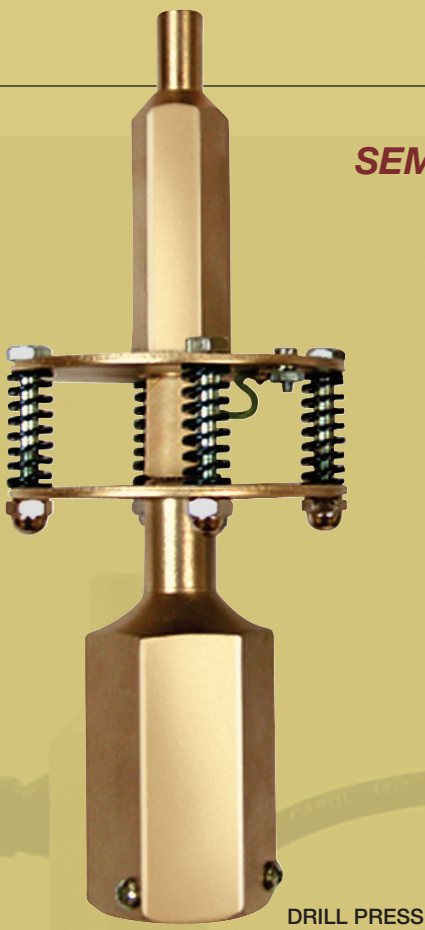
Our series of drill press branding irons are designed for semi-automated branding applications in environments ranging from the craftman's workshop to the small manufacturing facility. These high performance tools evolved from Hexacon's line of top-grade screw tip soldering irons. Quality engineering with industrial grade construction provides low cycle cost and years of dependable use.

DRILL PRESS FEATURES

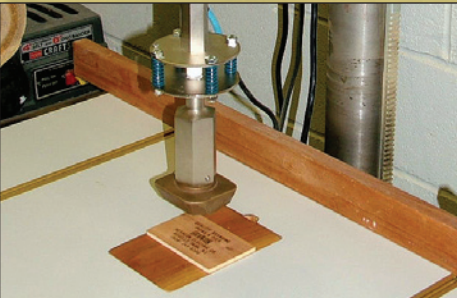
- Fits all drill presses with 1/2" capacity chuck
- Self leveling branding head floats on four springs ensuring uniform impressions
- Nickel-plated hexagonal steel case for strength and durability
- Heat deflectors diffuse convection currents
- Heater and cord are factory replaceable
- Dies can be supplied blank or engraved to your specification
- Side exiting, three-wire power core with strain relief
- S-12 iron holder included with each iron

DRILL PRESS IRON TABLE

Part No.	Power (watts)	Branding Die Size See Die Size Chart
DP-225	250	BD-225
DP-350	350	BD-350
DP-500	500	BD-500
DP-700	700	BD-700



Temperature Controller
Recommended to adjust die temperature for better images and extended heater life.



Drill Press Brander
Use a Drill Press Brander to repeatedly produce a quality brand time after time.



Iron Holder
An open cradle design accommodates large iron diameters for safe idle storage.

All Branding Irons are available in 115VAC or 230VAC

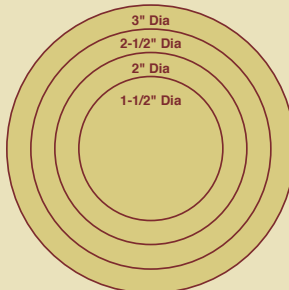
What We Have Learned After Years of Branding Experience...
Ask for your copy of "Getting the Most from your Branding Iron"

HEXAACON

BRANDING DIE SIZING CHART

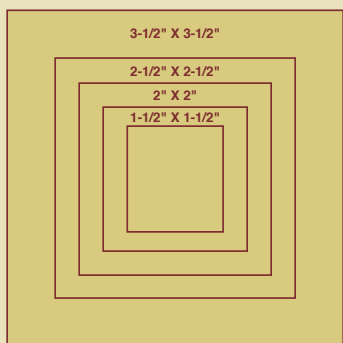


ROUND DIES			
		Dia	Wattage
SCREW	BD-225BDR	1 1/2"	250
	BD-350BDR	2"	350
	BD-500BDR	2 1/2"	500
	BD-700BDR	3"	700
PLUG	BD-P200BDR	1 1/2"	200
	BD-P300BDR	2"	300
	BD-P550BDR	2 1/2"	550



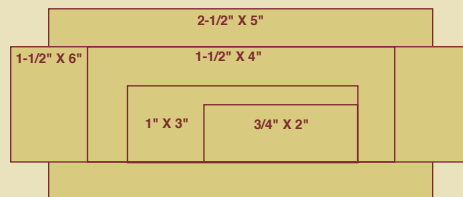
- Bronze dies available in round, square and rectangular shapes in sizes matched to each model.
- Select iron wattage to match die size
- Provide digital file

Note: Die illustrations are shown at half size



SQUARE DIES				
		Length	Width	Wattage
SCREW	BD-225BDS	1 1/2"	1 1/2"	250
	BD-350BDS	2"	2"	350
	BD-500BDS	2 1/2"	2 1/2"	500
	BD-700BDS	3 1/2"	3 1/2"	700
PLUG	BD-P200BDS	1 1/2"	1 1/2"	200
	BD-P300BDS	2"	2"	300
	BD-P550BDS	2 1/2"	2 1/2"	550

OBLONG DIES				
		Length	Width	Wattage
SCREW	BD-225BDO	2"	3/4"	250
	BD-350BDO	3"	1"	350
	BD-500BDO	4"	1 1/2"	500
	BD-700BDO	6"	1 1/2"	700
	BD-700BDO 2.5	5"	2 1/2"	700
PLUG	BD-P200BDO	2"	3/4"	200
	BD-P300BDO	3"	1"	300
	BD-P550BDO	4"	1 1/2"	550



HEXAACON ELECTRIC COMPANY

161 West Clay Ave., Roselle Park NJ 07204 • HexaconElectric.com • 908-245-6200 • fax: 908-245-6176